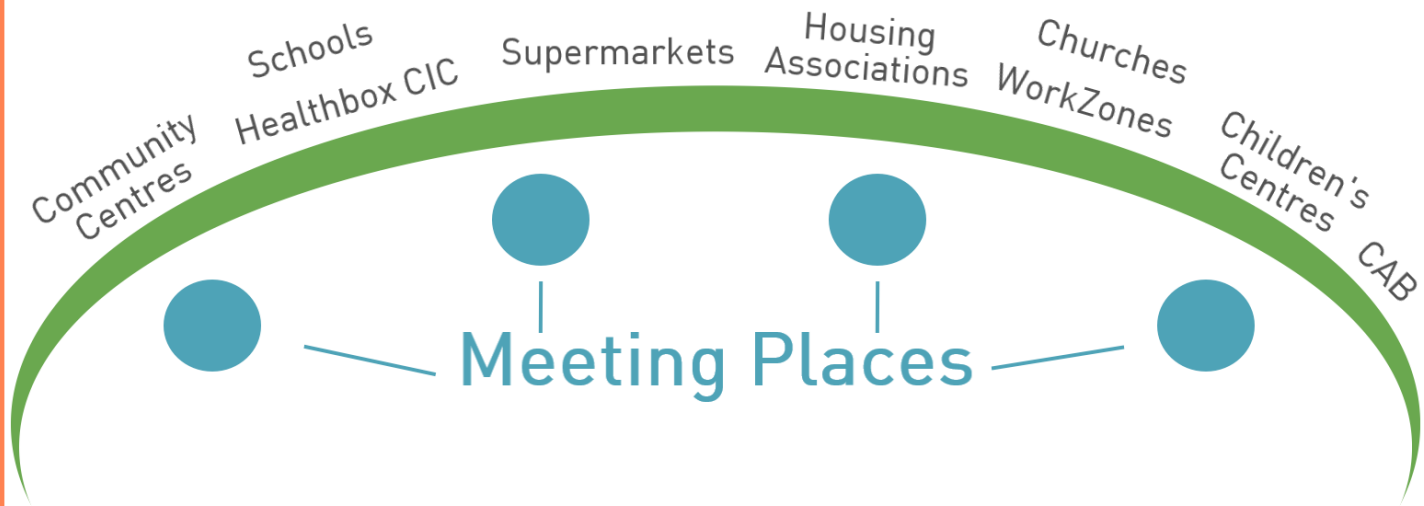


# The Welcome Network



Cheshire West & Chester

# WELCOME NETWORK



"Working together to bridge the gap"

## Founding Members

- Chester Voluntary Action Clare Harrison
- CWaC Cllrs Carol Gahan, Louise Gittins, Nicole Meardon
- CWaC Corporate Assessments Susan Taylor
- CWaC Public Health Fiona Reynolds
- CWaC Skills and Employment James Holden; Clare Latham
- CW Citizen's Advice Gaynor Rowlands; Liz Dickinson
- CWP NHS Foundation Trust Jude Chalmers
- Healthbox CIC Seona Dunne; Simon Sandford
- Holy Trinity Blacon Rev. Tina Upton
- Member of Parliament Justin Madders
- Consultant Tina Lees-Jones
- Plus Dane Housing Toria Buzza; Karen Traynor
- Transforming Lives Together Wendy Robertson
- West Cheshire Foodbank Wendy Ellis; Rev. Christine Jones; Alec Spencer
- West Cheshire Poverty Truth Commission Clare Roberts, Sonia Bassey

# Mission and Values

## **Mission**

To establish friendly, welcoming places which bring people and organisations together to reduce loneliness, end food poverty and create sustainable lives.

## **Values**

### **Friendly**

A warm, informal welcome, offering good food and actively creating positive and lasting relationships

### **Dignifying**

Every response is friendly and inclusive, building communities where all people have equal worth

### **Collaborative**

Working together with people and organisations, sharing specialist knowledge and good practice and making best use of resources



The Cheshire West & Chester

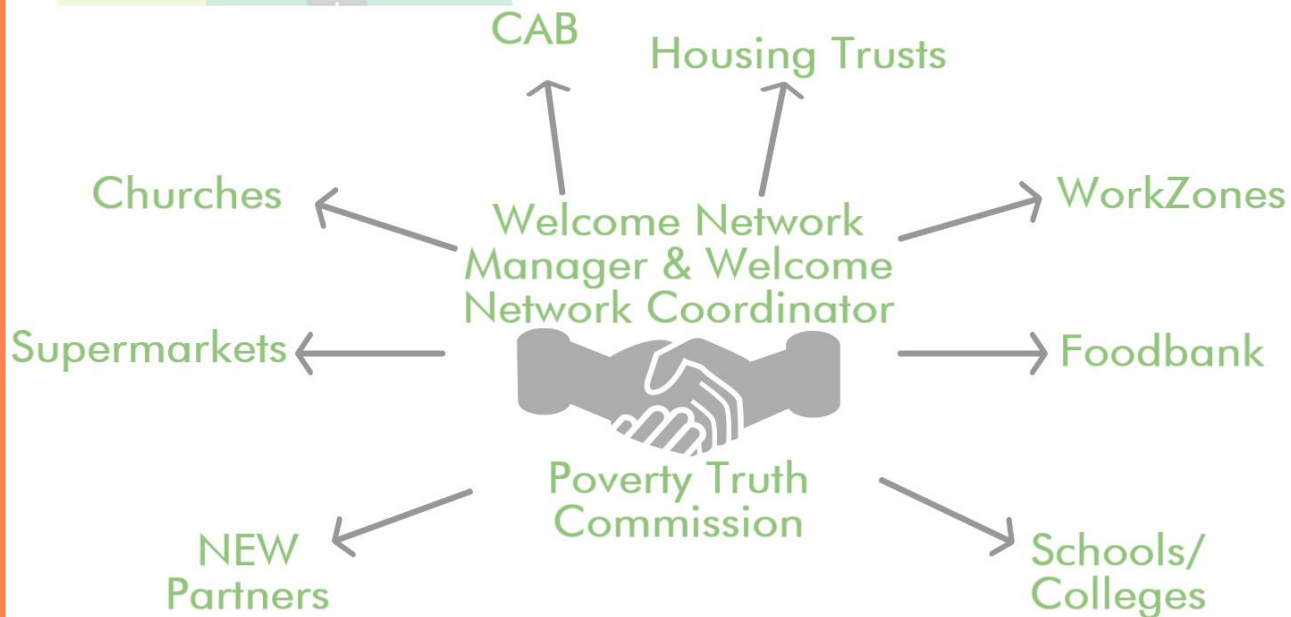
# LANDSCAPE



"Working together for the wider community"



# PARTNERS



"From referral to relationships"

# THE TEAM



Welcome Network  
Manager



Welcome Network  
Coorindator



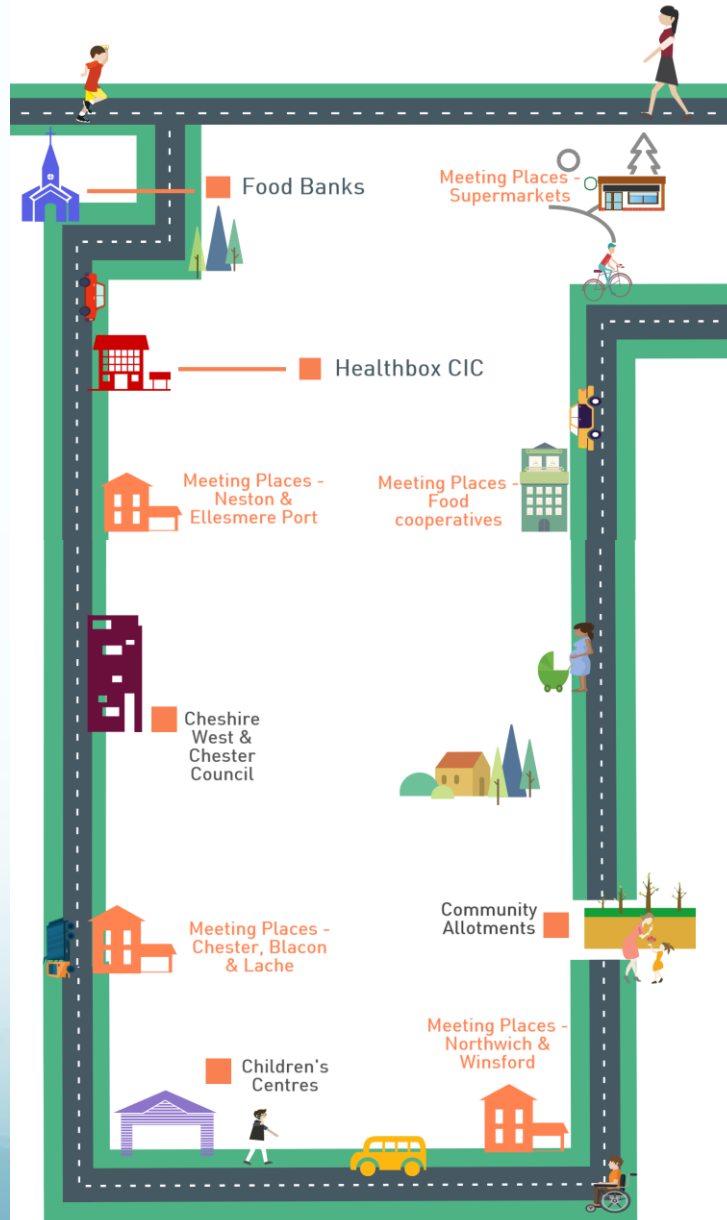
Poverty Truth  
Commission



"At the core of  
working  
together"



# The Welcome Network JOURNEY



# Thank you for listening

Phone: 0151 355 0205

Web: [www.healthboxcic.com](http://www.healthboxcic.com)

Email: [simon@healthboxcic.com](mailto:simon@healthboxcic.com)